

ITTY BITTY LOVE

Stitch count: 39w x 38h

SIMPLY SHAKER SAMPLER THREADS

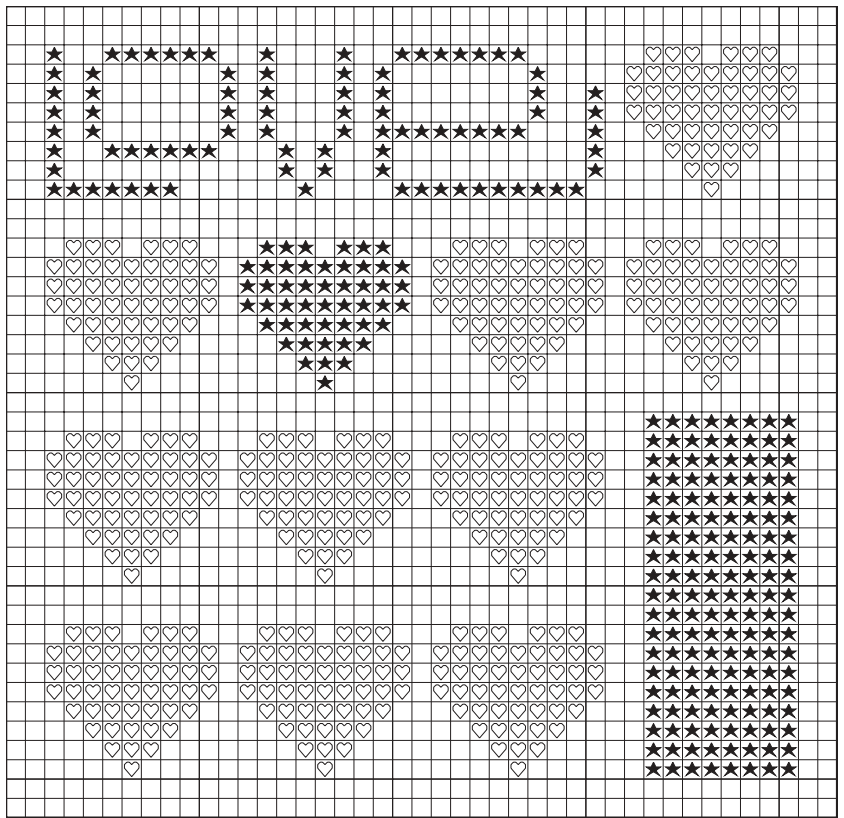
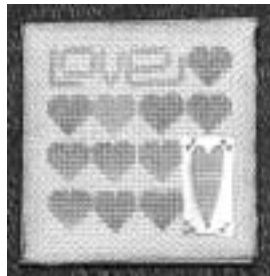
- ★ Melon Patch
- ♡ Rhubarb

Sterling Silver Heart Charm

Model stitched on 32 count Country French Latte (85-251) linen with one strand Simply Shaker hand-dyed floss over one linen thread. Attach our exclusive heart charm with 1 strand of Melon Patch in the solid stitched area. Design area is 1.21" x 1.18".

We framed ours in an itty bitty tin pin (TF04) to wear!

- Linen Wichelt Imports, Inc.
- Fiber The Gentle Art
- Tin Pin Twisted Threads
- Charm Twisted Threads



©2002 Ruth A. Sparrow and Twisted Threads

This chart may be reprinted and kitted.

It may not be sold. This chart may not be reproduced on the internet.



twistedshop@aol.com
www.twistedthreads.com